

Day Nursery

CHILD CARE CENTERS
REFERRALS • TRAINING

People in the News

Congratulations to **Marla Segal** who has been promoted to Director of the Day Nursery Guion Road Center. **Jackie Williams** has moved from lead teacher to the management team at Day Nursery Hendricks County and **Marti Thiery** has moved from lead teacher to the management team at Day Nursery State Center. Welcome to **Brandi Burns**, the new office manager of the Day Nursery Federal Center. Child Care Answers welcomes Mentor, **Ginger Caylor**; Data Manager, **Larry Gist** and Office Manager, **Lynn Harris**.

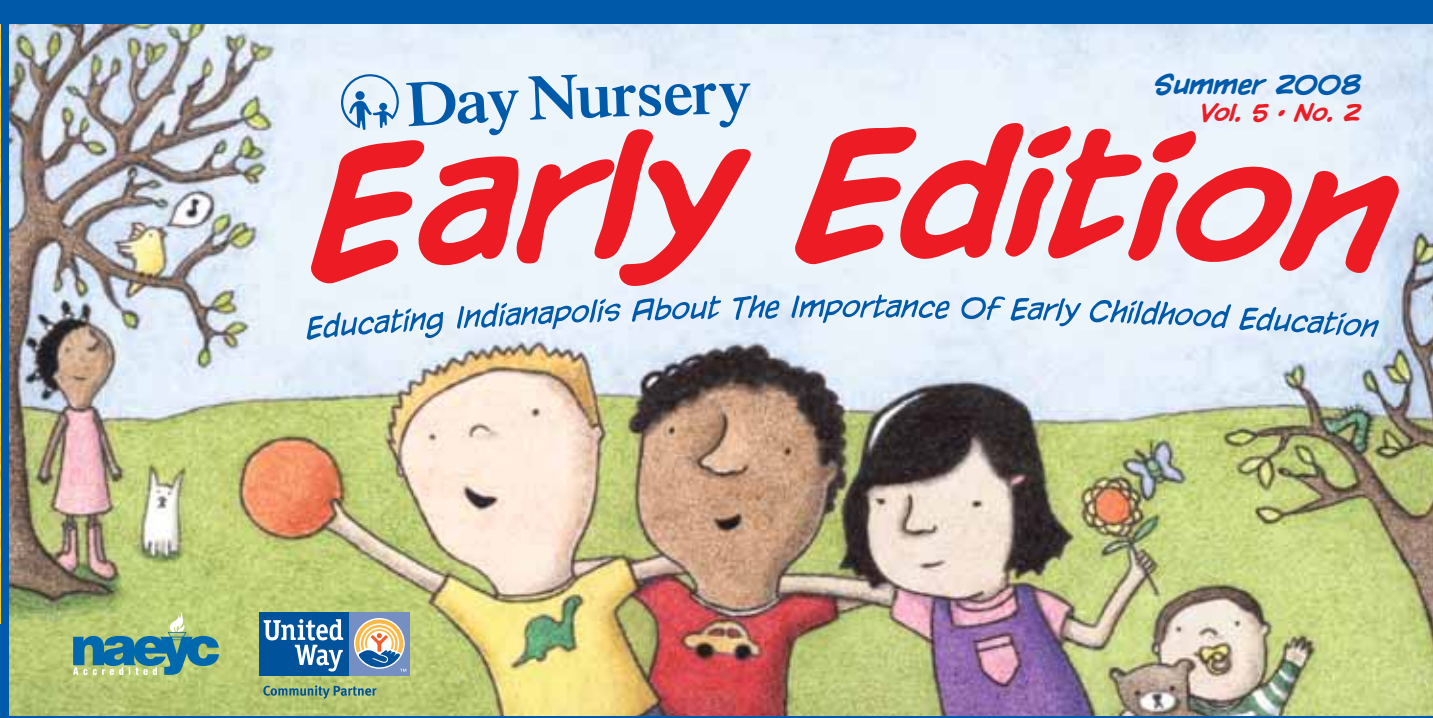
The **Day Nursery Auxiliary** is off to a busy start under the direction of President, **Jenny Rosebrock**; Vice President, **Shirley Romine**; Recording Secretary, **Bernice Hopp**; Corresponding Secretary, **Marge Skarbeck**; Treasurer, **Betsy Butz**; and Assistant Treasurer, **Ruth Hudson**. The Auxiliary is celebrating 70 years of service to the children of Day Nursery. The first meeting of the 2008-2009 year will be a salad pitch-in on September 5. Tickets are on sale now for the Auxiliary's annual **Style Show** and Luncheon fundraiser **October 3** at Oak Hill Mansion in Carmel. For info call Jenny Rosebrock at 753-8883.



One hundred and forty preschool children from all Day Nursery locations participated this summer in a **Swim America**® program at IUPUI. The goal of the six sessions was to gradually adapt the children to the water with skills such as submersion of the face and bobbing with bubble and air exchange. By the last class, many of the children had moved on to working on floating and kicking skills. Partial funding for Day Nursery's summer swim program comes from the **Lilly Endowment**, a Summer Youth Program Fund partner.

We are pleased to introduce the talents of Indianapolis illustrator **Candice Hartsough McDonald** in this issue. Check the top of this page for our new masthead created by Candice, as well as her illustration on the back page. To learn more about Candice, check out the **new Day Nursery blog** at <http://daynurseryindy.wordpress.com>.

Child Care Answers, the community outreach program of Day Nursery averages 90 inquiries a week from parents looking for child care in the Indy metro area. A recent email from a mother of two confirmed the value of this service to our community. "I just wanted to say thank you for all you have already done for me and my children. You have no idea how much you have helped me out by getting me this info." If you know of someone seeking information about child care, encourage them to call **631-4643** or visit childcareanswers.com.



Day Nursery

Summer 2008
Vol. 5 • No. 2

Early Edition

Educating Indianapolis About The Importance Of Early Childhood Education

naeyc
Accredited

United Way
Community Partner

Dear Friends,

As Day Nursery prepares to celebrate its 110th Birthday, the topics of sustainability, agency capacity and impact in the community are discussed with a sense of priority around the Board of Directors' table. Our leadership wisely sees the importance of strategic planning, both short term and long and is engaging in asking the questions whose answers will determine how Day Nursery continues to serve young children and their families for the next 110 years.

We are focusing harder than ever on the quality of each child's learning experience by using tools that demonstrate successful outcomes. Our job is to give children the best of everything they need to grow and develop as they become students, and ultimately adults.

To meet these important challenges, we must focus on not only our goals, but also our resources to reach those goals. We are fortunate in the talented people category, and have made changes in our organization to maximize the focus of that talent. Marsha Lindsey has assumed the responsibility of daily

agency operations, focusing on our teachers, our children and their success. The many talented people who deliver excellence to children every day are blossoming under her leadership.

As for me, I am moving my attention to the financial resources that will translate into sustainable service to the community. We hope this division of labor will result in a stronger Day Nursery Endowment, and ultimately stronger Day Nursery graduates and alumni! We are gratified by the support of the funding community in this endeavor, and without it, we wouldn't be able to continue our journey. The Women's Fund and the Indianapolis Foundation have generously provided special grants and continue to guide these efforts.

Another school year is almost upon us, and as we send our preschool graduates into elementary school for the 109th year, we are grateful for and humbled by the incredible privilege of preparing and guiding children in their most important early growth years.

Carolyn M. Dederer
Executive Director

Summer 2008 at Day Nursery

May 1 Day Nursery Family Night with **CURIOUS GEORGE** at the Children's Museum, sponsored by Clarian Health Partners. How can you go wrong if Mom and/or Dad picks you up at Day Nursery, your teacher hands the whole family a nutritious "sack supper" to take along for an evening of playing with Curious George? Over 400 children and families enjoyed this fun evening together after working up to it at school with Curious George activities, stories, videos, puzzles, art projects, and games.

The Day Nursery 2008 **SUMMER INSTITUTE** is a key part of Day Nursery's annual Staff Continuing Education program. All 150 classroom teachers are meeting for three 2.5 hour evening sessions during July and August with their colleagues who teach the same age groups. Topics include the Day Nursery philosophy of play centered developmentally appropriate classroom experiences, the application of Creative Curriculum® concepts, and the importance of the environment as the teacher creates the setting for preschool learning.

In addition to continuing in-service education, Day Nursery supports and facilitates college education for its employees as a means to self development and skilled, professional practice. About **40 EMPLOYEES ARE CURRENTLY ENROLLED IN DEGREE PROGRAMS**, and our children's offerings are enhanced because of their learning. A special party was held to honor Ronda Wilson and Cathy Johnson, of our central office staff who each received BA's at IUPUI this past semester.

CHILDREN'S ACHIEVEMENTS in an excellent learning environment are the result of several factors. Day Nursery measures achievement of age appropriate cognitive, social and emotional development with the help of a Creative Curriculum® Assessment tool. This year, we can report that 93% of our children have achieved this



Maya, age 5 (left) and her sister Dakoa, 4, enjoy a moment with Curious George at the Day Nursery family night at the Children's Museum this summer.



Ronda Wilson (left) and Cathy Johnson (right) were the guests of honor this spring at a gathering of Day Nursery staff in celebration of their academic achievements.

goal, 90% of our children have completed immunizations and health screenings, designed to set them up for maximum learning success. Our 60 classroom learning environments also undergo assessment screenings and have an average rating of 5.42 out of a possible 7 as we continue to improve and comply with National Association for the Education of Young Children standards.

SUMMER 2008 CONTINUED ON PAGE 2

Day Nursery



CHILD CARE CENTERS
REFERRALS • TRAINING

Summer 2008
The Early Edition
Susan Davis, Editor

A publication of the
Day Nursery Association, Inc.
615 N. Alabama St., Suite 300
Indianapolis, IN 46204
(317) 636-9197, Ext 222
info@daynursery.org
www.daynursery.org

If you wish to be removed from our mailing list, please contact Denise Hancock at (317) 636-9197 Ext. 222 or deniseh@daynursery.org

Day Nursery Association Administrative Staff

Carolyn Dederer, Executive Director, Ext. 229
Susan Davis, Director of Marketing, Ext. 227
Patty Fisher, Director of Curriculum & Accreditation, Ext. 232
Tammy Gossman, Director of Human Resources, Ext. 236
Marsha Hearn-Lindsey, Director of Operations, Ext. 226
Wanda Kaiser, Controller, Ext. 231
Beth Rodriguez, Director of Development, Ext. 240

Child Care Answers, a program of Day Nursery
(317) 636-5727 or (317) 631-4643
Mindy Bennett, Program Director

2008-09 Day Nursery Association Board of Directors

Elizabeth Schlueter, President
Donna Oklak, Vice President – Development
Shirley Bishop, Vice President - Strategic Planning
Milton Miller, Treasurer
Lisa Baldwin, Secretary
Roxanne Whitley-Anderson
Anne Beaty
John Borel
Stephanie Demetron
Shannon White Jordan
Suzann W. Lupton
Ethel Middlebrook
Kathy Osborn
Steve Pockrass
Jenny Rosebrock
Suzanne Sweeney
John Twenty, MD

Day Nursery Centers

Clarian Early Care & Education Center
2140 Boulevard Place, Indianapolis 46202
(317) 283-3838

Federal Center
575 N. Pennsylvania St., Indianapolis 46204
(317) 226-5487

Ft. Harrison Start Smart 4 Children
5545 Herbert Lord Road, Indianapolis 46216
(317) 377-7015

Guion Road Early Care & Education Center
3939 W. 56th St., Indianapolis 46254
(317) 291-8048

Hendricks County Early Care and Education Center
1351 N. Ronald Reagan Pkwy., Avon 46123
(317) 271-2603

Ruth A. Lilly Center
3522 N. Central Avenue, Indianapolis 46205
(317) 926-1203

Sniffles 'n Such-Drop-in care for mildly ill children
2140 Boulevard Place, Indianapolis 46202
(317) 283-3838

State Government Center
100 N. Senate N150, Indianapolis 46204
(317) 233-1776

Day Nursery Expands Reach of Tuition Assistance Program

The 2008 Annual Tuition Assistance Campaign kicked off this year proclaiming **The Road to Success Begins at Day Nursery!** Our goal of raising \$355,000 to provide financial assistance to children and families in need is ambitious, but more critical than ever.

With the rising costs of food and gas prices, low-to-moderate income families are some of the hardest hit. In response to numerous requests and feedback from the community, Day Nursery has expanded the reach of its Tuition Assistance Program in two important ways. First, we have expanded our income guidelines to cover up to 60% of the cost for care. This helps to bridge the gap between families who qualify for a child care voucher from the state, but due to huge waiting lists are forced to place their children in sub-standard or potentially dangerous care so that they can continue to work or go to school.

Second, we have expanded our financial assistance to cover infants in our care. Recognizing that high quality center-based care for an infant is very expensive and out of reach for many families, we made the commitment to provide assistance to qualifying parents in need. These expanded services are already making a difference in our Guion Road Center, where the families of two of our infants are



working hard to improve their lives.

The first is a young, single mother who will be a junior in high school this year. She is on the waiting list for government assistance, but with more than 2,700 others on the waiting list, it may take months for her number to come up. In the meantime, Day Nursery is able to help her with 60% of the fees. This allows her to attend summer school now and begin the school year in the fall so that she will ultimately graduate and begin planning for college. Our second family has two children in our center and both parents are graduate students. With limited income, they are working hard to achieve higher education so that they may both attain excellent jobs and give back to the community in the future.

Thanks to generous donors to Day Nursery, we are able to help many families take the steps necessary for financial stability while providing their children with the tools they need to be successful in first grade and beyond. These scholarships, which can range from \$500 to \$7,500 a year, have a dual benefit – they contribute to the economic stability of the family and prepare children for a bright future.

Don't forget, you have the option to make a quarterly, monthly or even weekly gift to Day Nursery using your credit card. Please visit www.daynursery.org and start changing lives today!

SUMMER 2008 CONTINUED FROM PG 1

UNITED WAY SUCCESS is measured by successful fund raising campaigns that translate into successful community services. Day Nursery received the highest rating possible by United Way this year which translates into more dollars for preschool scholarships and services. This rating was earned through excellence in programming and management as well as providing high community impact.

SCHOLARSHIPS are now available for Day Nursery children that cover 5% to 60% of total fees, based on family income. About 20% of Day Nursery families qualify and use this opportunity to access our nationally accredited excellent program.

PATHS TO QUALITY is a voluntary statewide system

created to improve the quality of child care and early education, give parents a tool to find the best quality program for their family's needs, and support and recognize providers on a four-level rating system. Mentoring is the chosen method to assist child care providers in raising their ratings. Child Care Answers has been chosen to provide mentoring services in central IN. The program officially begins October 1st.

SUCCESS BY SIX is a United Way initiative focusing on young children. Child Care Answers provides mentoring services to 30 child care providers on the near East Side as a part of its strategy to address school readiness needs and improve child care services in this neighborhood.

The Next Century Society at Day Nursery

The Next Century Society is comprised of visionaries who are committed to Day Nursery and its long-term ability to provide the very highest quality early care and education to all children so that they may enter first grade ready to learn.

Making a charitable bequest is one of the simplest, yet most significant ways to make a lasting gift to Day Nursery. A bequest allows you to fund the programs and operations of Day Nursery or establish an endowed scholarship.

A bequest will also give you the power to:

- Make a gift larger than what might have been possible during your lifetime
- Keep your assets under control
- Reduce your taxable estate
- Have an unlimited estate tax charitable deduction

How to Make a Bequest

A bequest is easily made through a simple addition of language to your will, trust, life insurance policy, or retirement plan. Your gift to Day Nursery may be stated as a percentage of your estate or from its residual. A separate agreement with Day Nursery is made to describe the eventual use of your gift should you wish to restrict your gift. Bequests are revocable and may be altered as your circumstances change.



Please share this sample language below with your legal counsel. Donors or their legal counsel are encouraged to contact Day Nursery for guidance on the correct language to use for specific gifts.

I give to Day Nursery Association of Indianapolis, a non-profit Indiana corporation, located at 615 N. Alabama Street, Suite 300, Indianapolis, IN 46204, Tax ID: 35-0888763, _____ (% of my estate, dollars, property, securities, the residue, or remainder of my estate) to be used for such purposes as the Board of Directors determines at the time this bequest becomes effective.

For more information about making a bequest to Day Nursery, please contact the Development Office at (317) 636-9197 Ext. 240.

Donors

January 1 - June 30, 2008

Day Nursery Association

\$100,000+

United Way of Central Indiana
Day Nursery Foundation

\$50,000 +

The Indianapolis Foundation, a
CICF affiliate

\$10,000 +

Day Nursery Auxiliary
The Gannett Foundation/Indianapolis
Star Season for Sharing
Nicholas H. Noyes Jr. Memorial Foundation

\$5,000 +

Anonymous
Arthur Jordan Foundation
Ayles Foundation
Stephen F. and Denise Fry
Junior League of Indianapolis
Methodist Hospital Task Core

\$1,000 +

Arts Council of Indianapolis, Indiana
Arts Commission and National
Endowment of the Arts
David and Nancy Berst
David and Shirley Bishop
Brighton Foundation Trust/Robert and
Jean Markley
Bob and Julie Burns
John Fair and Cara Breidster
Eugene E. and Helene M. Henn
Gary Klotz
Lilly Endowment, Inc.
Milton J. and Jennifer Miller
Denny and Donna Oklak
Steve Pockrass and Kathy Osborn
Rotary Foundation of Indianapolis, Inc.
Mary Ann Schmid
Suzanne Sweeney
John and Ruth Twenty
Wellpoint Associate Giving Campaign

\$500 - \$999

Anonymous
AFGE Local 201
Melinda Bennett
Samuel B. and Susan Davis
Carolyn M. Dederer
Eli Lilly & Company Employees
Greenwall Sponsel & Co., Inc.
Jonathan A. Lee
William K. and Marsha Lindsey
Jon and Suzann Lupton
John E.D. and Sylvia Peacock
John Ross
Elizabeth Schlueter
Stephen L. and Julie Scott
Day Nursery State Center Parents
Cathy F. Stoll
Gretchen A. Turner

\$250 - \$499

Robert and Sally Anderson
Chuck and Lisa Baldwin
Celesta Bates
Howard V. and Doris Bibler
Bonnie S. Boards
Rosanne Bradley
William B. and Adele Carr
John R. Clark
Tony Guisinger
Gary and Rissa Herndon
Gerald V. and Rita Hurm
Wanda J. Kaiser
Donna L. Kellison
Cheryl A. Knierim
James and Laura Legault
John J. McKearin
Judy H. Wade

\$100 - \$249

Megan L. Adair
Joni Albright and Edward Lutz
Walt and Marty Bagot
Barnes and Noble Booksellers
Anne E. Belcher
Jonathan J. Benson
Roma J. Billings
Chris Boggs
Borel Construction Co., Inc./John Borel
Bob and Sarah Bratton
Catrica Brown
Beverly Burrus
Kathleen M. Busto
Jan Marie Carroll
Brian and Delsie Cavanaugh
Richeal M. Cline
Steve Clouse
Sally A. Coombs
Henry B. Diaz
Debra Donahue
Douglas P. Emery
Jack and Melanie Esselman
Ed and Patricia Fisher

Vanessa L. Fletcher

Al and Nancy Gatmaitan
Daryl and Heidi Gibbs
Tammy Gossman
Larry K. Greenwall
Denise Hancock
Greg and Theresa Hooten
Gaye Ireland
Catherine D. Johnson
Eva Mae Johnson

Roger L. Kessler
Sally Krause
Ann Lawrence
Judith A. Lindsay
Lloyd C. and Wendy Lyons
Tim O. Maley

Yoland McDaniel-Wood
Joann J. Muirhead
Michael R. and Laura Opincar
Stafford W. and Clara Pile
Rebecca L. Richardson
Toby J. Rickett
Scott and Beth Rodriguez
Robert V. and Jenny Rosebrock
James L. and Rita Rosensteele
Lynda Ann Ruble
Catherine A. Meeker Scherschel
Mrs. Samar N. Srour
Terrill and Joslyn Sullivan
Mary Jane Summers
Andrea L. Vermeulen
Margaret E. Weis
Charles W. and L. Jeanne White
Rene Withers

up to \$99

Anonymous (2)
AV Framing Gallery/Sarah Adams
Shelly Anderson
Belinda Bailey
Benefit Associates
Drew and Mary Boggs
Kimberly Bower
Mary Brown
Wendy G. Budde
Kent and Andrea Burrow
Darby R. Casady
Katharine A. Kennedy Cavanaugh
Doug and Brenda Chappell
Arlindo and Kathleen Chimbanda
Anthony James Clade
William Todd and Patricia Clift
Mary Coffey
Steve and Becky Crane
Jarrad Fodemski and Olivia Roney
Greg and Carol Dale
DiStaulo Consulting/Amy DiStaulo
Ann M. Ellis
William and Colette Fike
Joseph K. and Katherine Fitzgerald
Thomas and Debbie Gamble
Julie Grothe
Tracy Heaton
Tonya L. Hegwood
Stacy Henle
Lee and Lana Horner
Bruce and Pat Hubley
Mark and Michaela Huesing
Pamela A. Jacobs
Ralph Jones
Vicki Jones
Shannon White Jordan
Steve and Kristin Keltner
Holly W. Lambert
Justin M. and Tracy Lane
Wunji Lau
Life Scan, a Johnson and Johnson Company
Thomas R. and Sarah S. Lugar
Molly Manley
James L. and Joyce Martin
Carol A. Mattson
Jewel May
Wendy McDonald



Tuition Assistance Program Helps Families

Day Nursery believes that all children, regardless of a family's income, should have access to high quality early care and education. Support of the Tuition Assistance Program gives families the opportunity to choose quality early learning programs for their children while improving their tenuous hold on self-sufficiency. Twenty percent of Day Nursery children (more than 250 children a year) receive financial assistance through the Tuition Assistance Program. Since the beginning of the year, in addition to gifts from individual donors, Day Nursery has received these generous gifts in support the Tuition Assistance Program:

Day Nursery Auxiliary - \$25,000

Nicholas H. Noyes Jr. Memorial Foundation - \$15,000

The Gannett Foundation - \$10,000

Methodist Hospital Task Core - \$6,550

Ayres Foundation - \$5,000

Junior League of Indianapolis - \$5,000

Brighton Foundation Trust - \$3,000

Rotary Foundation of Indianapolis - \$3,000



Indianapolis Foundation



The Indianapolis Foundation generously granted Day Nursery Association \$50,000 to increase organizational sustainability by allowing us to add a Director of Operations position. This gift is a strategic complement to the 2007 award from the Women's Fund of Central Indiana for the same initiative.

With this addition, the role of the Executive Director will be re-defined to have an external focus with an emphasis on building strategic alliances and partnerships to expand Day Nursery's programs, increasing new revenue sources by taking a more

significant role in the development process, developing entrepreneurial business activities and enhancing focus on board governance to increase diversity. This investment strengthens Day Nursery as we embark upon our 110th Anniversary of serving the youngest children in the Indianapolis community. We are truly grateful for this gift from the Indianapolis Foundation and for their continuing support of our mission.

Johnny McGinnis
Susan R. Meyer
Dr. Radmila Micanovic
Ethel Middlebrook
Amy Miller
Holly Miller
Matthew B. Miller
Carrie Montgomery
Barbara Murray
Ron and Jackie Norio
Ploi Pagdalian
Caroline Pentzien
Michelle L. Perkins-Catt
Ann Plaskett
Vicky L. Rumble
Tamara J. Rutledge
SAFECO Employees
Nicole Y. Sanders
David and Gayle Schlueter
Scott E. Seip
Jerry Shepherd
Susan R. Silas
Jenny Skehan
William D. and Teresa Smith
Sharon D. Smith
Ed and Vicky Stage
Rachel D. Stalets
Amber Stephanoff
Sylvia K. Sterling
Maggie Ann Stimming
Tisha L. Syrus
L. Gene and Rosemary Tanner
Carol A. Thorne
Thomas and Amy Tokash
Myrna Trump
Ken and Lynn Wakefield
Ms. Loretta L. Walston
Darcy Weaver
Weintraut & Associates, Inc./Linda
Weintraut
Liberty Ann Wilken
Brenda A. Williams
Jacklyn Williams

Gifts-in-Kind Donors

\$10,000 +

American Legion Auxiliary

\$1,000 +

CVS Distribution Center
Indy's Child & Linear Publishing
Thomas R. and Sarah S. Lugar

\$500 - \$999

Burkhart Network, LLC/Lorene Burkhart
Pacers Foundation, Inc.

\$250 - \$499

Mass Avenue Wine Shoppe
Pearson Partners
Leslie Tislow

\$100 - \$249

Fountain Square Theatre
Thomas F. and Barbara Maurath
Doug and Kelly Purdy

up to \$99

BookVine for Children
Laura Hilden
Jon and Suzann Lupton
Dennis and Donna Oklak
The Nestle Inn
Robin Reagan
L. Gene and Rosemary Tanner
John and Ruth Twenty

Honorary & Memorial Contributions

Honorary

In Honor of Bob and Sally Anderson

Elizabeth S. Bedwell

In Honor of Brenda Howard

Mary S.M. Johnson

In Honor of Carolyn Dederer

Mary S.M. Johnson

In Honor of Stacie Clay

Ronald and Barbara Clay

Thank An Educator Campaign

In Honor of Patricia Britton

James T. and Amy Ruebeck

In Honor of Jenna Webb

James T. and Amy Ruebeck

Memorial

In Memory of Virginia Baun

Dr. Barbara Batchelor

In Memory of Ryan Fry

Shelby and Marjan Hurd
Community Hospital Surgical Services/
Indiana Surgery Center East

In Memory of Dorothy Stuckey

James E. and Nancy Cangany
Michiharu and Emiko Homma
Diana J. Miller
Steve Pockrass and Kathy Osborn
Paul T. and Maria Stuckey
Bruce and Candace Walker
Sharon M. Wardrip

Day Nursery Foundation

General Contributions

\$1,000+

Kirr, Marbach & Company, LLC
Matthew D. Kirr
Ted and Judy Christofolis

\$500 - \$999

Chris Boggs

\$250-\$499

Doug and Kelly Purdy

\$100-\$249

SAFECO-Employees
Thomas F. and Barbara Maurath

Honorary & Memorial Gifts

In Memory of DeWitt M. Brown

Day Nursery Auxiliary

In Memory of Peg Ferree

Day Nursery Auxiliary

In Memory of G. Thomas Carlino

Alan L. and Anne W. Dresser

In Memory of Nancy Wohlgenuth

Jeffery
Thomas R. and Sarah S. Lugar

In Memory of Lois Holton

Frank and Mary Boarini
Day Nursery Auxiliary
Ellen Sue Harris
Martha Hill

Johnson-Weaver Foundation/Gracia
Floyd
The Kittle Foundation
George and B.J. Maley

In Memory of Robert Maurath

Charles and Mary Backscheider
Brighton Foundation Trust/Robert and
Jean Markley
Jeffrey Schloemer and Marcia Banker
Alice S. Tatem

In Memory of Dorothy Stuckey

Janice B. Connett
Lynnette Czizek
Rosemary Enigh
Steve and Kristin Keltner
Thomas R. and Sarah S. Lugar
Thomas F. and Barbara Maurath

In Memory of Marjorie L. Trieb

Day Nursery Auxiliary
Thomas R. and Sarah S. Lugar

In Memory of Kelcy Whitman

Chris Boggs
Margot Eccles

Honorary

In Honor of Susan Davis

Day Nursery Auxiliary

Day Nursery Auxiliary

General Contributions

\$100 - \$249

Mary Jane Summers
F. Bruce and Sally Peck
Joan Lyday
Jane Murphy
Merrill J. and Jean Sauriol

up to \$99

Martha Hill
Thomas and Jan Krukemeier
Blanche Weissert
Thomas R. and Sarah S. Lugar
Robin Coffee

Memorial Gifts

In Memory of Lois Holton

Robert and Sally Anderson

In Memory of Peg Ferree

Robert and Sally Anderson





**Dear Ms. Nancy and
Day Nursery State Center staff:**

We wanted to let you know how much your teaching and caring has meant to Zani and to us. Zani had a wonderful time in your classroom. Because of the environment you have created she felt cared for and loved there, and we always felt she was in a safe and educational place.

Thank you for all the extra things you did for all of us. Every picture you sent home and every special project you did with the kids was noticed and appreciated. You provided creative mentoring while still allowing the kids to be themselves and to be curious and grow.

*-Ana Papakhian & Robert Cassidy,
Zani's Mom and Dad*

**Dear Day Nursery
Lilly Center:**

Thank you for all you as an organization have done for my son. I have noticed so many changes in him that have been advantageous to his development. I thank you for the leadership at the facility as well. You have always been straightforward about issues concerning my son and I, as a parent, appreciate knowing what areas of his learning and and/or behavior need work.

-Patricia A. Morris-Avant

**Day Nursery
Mission
Statement**

As a non-profit organization of professional staff and volunteers, Day Nursery's mission is to assure excellent early care and education for young children in central Indiana.

We promise: NAEYC accredited programs in our child care centers, curriculum that inspires life-long learning, flexible fee arrangements, continuous training and development of staff, community education and resources, leadership through public policy, and community and corporate support.



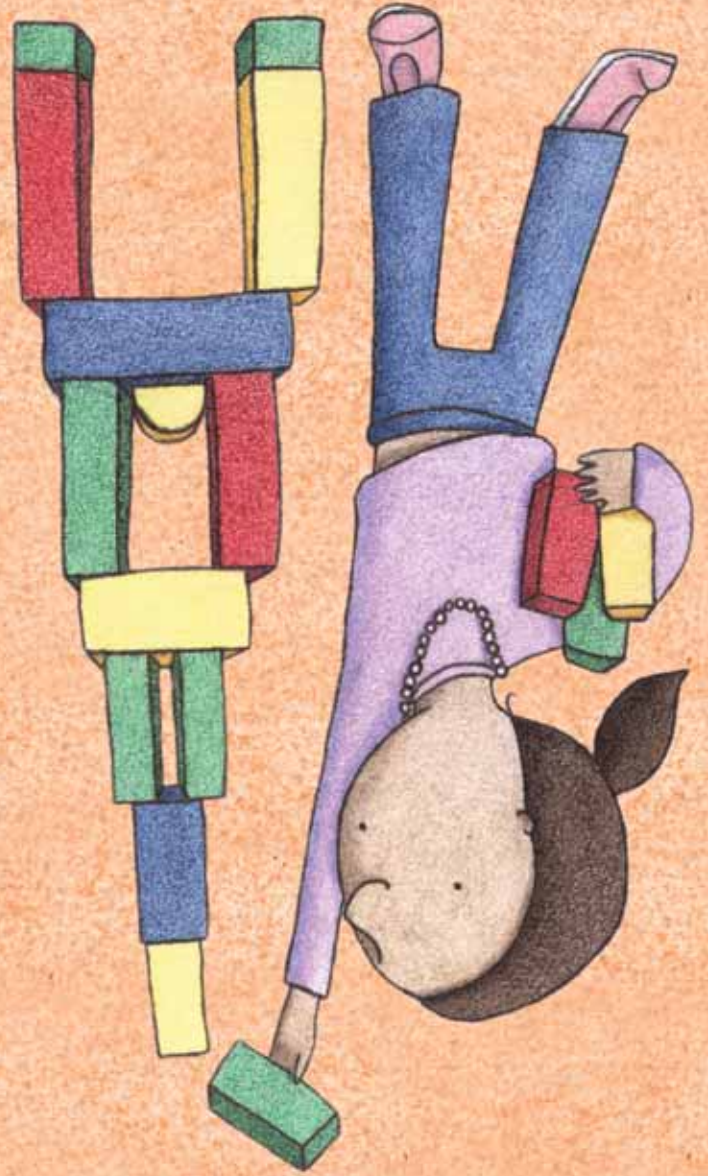
**Dear Day Nursery
Clarian Center-**

Thanks to all who have made positive impacts in our children.

We are approaching a new chapter of education and growing with our oldest Jackson but are thankful for the foundation established at the Day Nursery. A foundation based on the support and encouragement of the teachers. We are glad that Abigail and Maddox have a few more years to enjoy this time with all of you...We will always be grateful for your efforts.

Thank you all for all that you do!

Peggy, Keith, Jackson, Abigail & Maddox Iler



CHILD CARE CENTERS
REFERRALS • TRAINING



Administrative Office
615 N. Alabama Street, Suite 300
Indianapolis, IN 46204
(317) 636-9197 Ext. 222
info@daynursery.org

NONPROFIT ORG.
U.S. POSTAGE
PAID
Indianapolis
Permit No. 136